

Joint Air-to-Surface Standoff Missile— Extended Range

Powerful Proven JASSM Capabilities at Extended Ranges

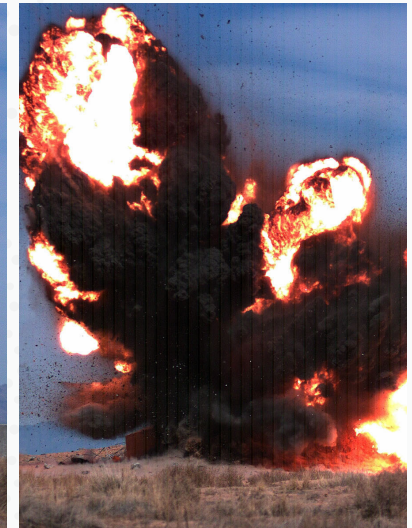
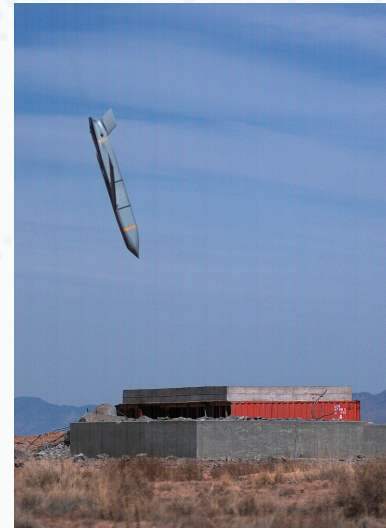


JASSM[®]-ER

POWERFUL PROVEN JASSM CAPABILITIES AT EXTENDED RANGES

JASSM-ER is an extended long-range, conventional, air-to-ground, precision-guided standoff missile designed to meet the needs of the U.S. and allied Warfighters. JASSM-ER shares the same powerful capabilities and stealthy characteristics of the baseline JASSM, but with more than two-and-a-half times the range. This additional reach allows Warfighters to deploy JASSM-ER against high-value, well-fortified, fixed and relocatable targets while remaining clear of highly defended airspace and long-range surface-to-air missiles.

A 2,000-pound class weapon, JASSM-ER can be employed in adverse weather conditions, day or night, using a state-of-the-art infrared seeker and enhanced digital anti-jam Global Positioning System (GPS) to dial into specific target aimpoints. With unmatched performance, reliability and lethality, JASSM-ER provides best-in-class value.



SPECIFICATIONS

Length.....	168 in / 4.26m
Width.....	>25 in / >63.5 cm
Range.....	>500 nmi / >926 km
Warhead	1,000-lb Blast Fragmentation
Seeker.....	Infrared
Storage	15 years

FEATURES

- Extended standoff range
- Simple mission planning
- Highly survivable
- Adverse-weather operable
- GPS/Inertial Measurement Unit Guidance
- Pinpoint accuracy
- High lethality
- Fully compatible with B-1B and F-15E aircraft
- Current integration efforts on B-52 and F-16
- GPS-jam resistant

Lockheed Martin Corporation
Missiles and Fire Control
Business Development
Phone: (407) 356-9729
www.lockheedmartin.com/mfc

© 2019 Lockheed Martin Corporation.

JASSM is a registered trademark of Lockheed Martin Corporation. All rights reserved.
Distribution Statement A. Approved for public release; distribution is unlimited 97TW-2019-0268.